

## Context

With 264 deaths per 100,000 live births\* and 26 deaths per 1,000 live births\*, **maternal and neonatal mortality rates are very high** in Burkina Faso.

Women are often under-prepared for pregnancy and delay seeking medical consultation before childbirth or in the event of obstetric complications. **These delays in care increase the risks** of complications and death for both mothers and their babies.

Supporting pregnant women in preparing for childbirth and emergencies helps reduce these risks.

\*WHO 2020

## Why is being prepared crucial?

The Birth and Emergency Preparedness Plan is considered by the World Health Organization (WHO) **as an essential component of prenatal care**. It includes a set of measures taken by the woman, her partner, family, and community **to ensure that women consult qualified personnel more often during pregnancy**, childbirth, or in the event of obstetric and neonatal emergencies.

## What is the birth and emergency planner?

The planner is distributed to women during prenatal care. It outlines the key elements of the WHO's plan and **prepares women to visit the health center** for prenatal consultations, childbirth, or in case of pregnancy-related complications.



**Women use the brochure to discuss their pregnancy monitoring and childbirth preparation with their families.**

In Burkina Faso, the brochure was developed by the Ministry of Health with the support of Enfants du Monde and its partners. Today, **it is a maternal health tool integrated within the public health system of Burkina Faso.**

## Users & beneficiaries

- Pregnant women, their husbands, and their families;
- Healthcare providers;
- Community-based health workers and village midwives.

In 2023, 130,000 women received the birth preparation and emergency planner.

## Let's distribute the preparation planner together!

In collaboration with our partners, we support the Ministry of Health of Burkina Faso in implementing training for healthcare providers on the Birth and Emergency Preparedness Plan (BEPP) and in producing planners for 9 out of 70 health districts. To expand this initiative so that every pregnant woman in Burkina Faso can receive adequate advice on her pregnancy, financial support is still needed.



Healthcare workers  
are trained



Parents receive the  
planner

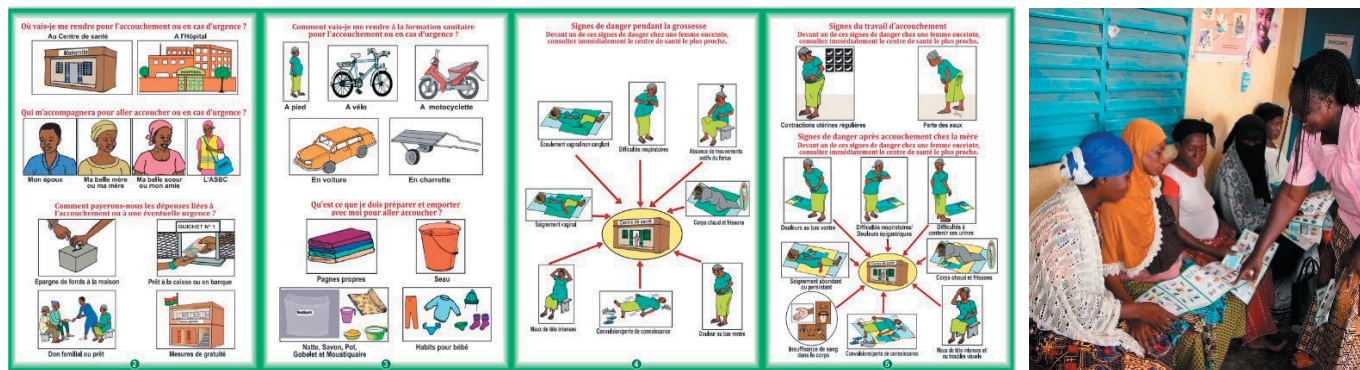


The planner sparks  
discussions within the family



Childbirth takes place  
safely at the health center.

# The birth preparation and emergency planner in practice



The planner is based on images to ensure it is understandable for all audiences, even those who are illiterate.

## Testimonials

*"Seeing the pictures helped me a lot to prepare when I was pregnant. Additionally, the health workers explained everything well to us..."* **Woman from Ouo**

*"The planner gives advice to women. It also says that men should always discuss with their wives... If your wife gives birth at home, it's a problem... I'm saving money to cover expenses if my wife becomes anaemic."* **Man from Ouo**

*"Before this planner, I barely discussed birth preparation with pregnant women. Now, I take the time to talk with them. This planner has strengthened my skills!"* **Auxiliary midwife at a health centre**

## Planner benefits

### Easy to understand

- Key messages are illustrated with images and are understandable for illiterate people;
- Images are adapted to the country's context;
- Format easy to carry.

### Improved relations between patients and healthcare staff

- Support for enhanced communication;
- Advice of improved quality.

### Better communication within families

- Husband's involvement increased;
- External resources mobilization facilitated

Developed in partnership with:



### Contact:

In Burkina Faso: edmsahel@fasonet.bf - Tel: +226 25 36 08 46  
In Geneva: info@edm.ch - Tel: +41 22 798 88 81